

Parag Parikh Flexi Cap Fund

(Formerly known as Parag Parikh Long Term Equity Fund)

An open ended dynamic Equity scheme investing across large cap, mid cap, small cap stocks.



Name of the fund	Parag Parikh Flexi Cap Fund
Investment Objective	To seek to generate long-term capital growth from an actively managed portfolio primarily of Equity and Equity Related Securities. Scheme shall invest in Indian equities, foreign equities and related instruments and debt securities.
Type of the Scheme	An open ended dynamic Equity scheme investing across large cap, mid cap, small cap Stocks.
Date of Allotment	May 24, 2013
Name of the Fund Managers	Mr. Rajeev Thakkar - Equity Fund Manager (Since Inception) Mr. Raunak Onkar - Dedicated Fund Manager for Overseas Securities (Since Inception) Mr. Raj Mehta - Debt Fund Manager (Since January 27, 2016) Mr. Rukun Tarachandani - Equity Fund Manager (Since May 16, 2022)
Assets Under Management (AUM) as on June 30, 2022	₹ 22,323.99 Crores
Average AUM for the Month	₹ 22,124.45 Crores
Net Asset Value (NAV) as on June 30, 2022	Regular Plan: 43.9943 Direct Plan: 46.8274
Month End Expense Ratio	Regular Plan: 1.94%* Direct Plan: 0.79%* *Including additional expenses and GST on management fees. Total Expense ratio is as on last business day of the month
Tier 1 Benchmark Index	NIFTY 500 (TRI)
Additional Benchmark	NIFTY 50 (TRI)
Minimum Application Amount	New Purchase: ₹ 1,000 Additional Purchase: ₹ 1,000 Monthly SIP: ₹ 1,000, Quarterly SIP: ₹ 3,000

Load Structure

Entry Load	Not Applicable
Exit Load	In respect of each purchase / switch-in of Units, 10% of the units ("the limit") may be redeemed without any exit load from the date of allotment. Any redemption or switch-out in excess of the limit shall be subject to the following exit load: 2.00% if the investment is redeemed on or before 365 days from the date of allotment of units. 1.00% if the investment is redeemed after 365 days but on or before 730 days from the date of allotment of units. No Exit Load will be charged if investment is redeemed after 730 days from the date of allotment of units. No exit load will be charged, in case of switch transactions between Regular Plan and Direct Plan of the Scheme for existing as well as prospective investors.

Quantitative Indicators

Beta	0.78
Standard Deviation	19.27%
Sharpe Ratio	0.81
Portfolio Turnover (excl Equity Arbitrage)	15.12%
Portfolio Turnover (incl Equity Arbitrage)	20.57%

- Above figures are annualised.
- Risk free rate assumed to be 4.95% (FBIL Overnight MIBOR as on 30th June, 2022)

Note: Fresh investment in foreign securities have been temporarily suspended from Feb. 2, 2022 as advised by SEBI pursuant to email dated January 28, 2022 and AMFI Clarification dated January 30, 2022, in order to avoid breach of industry-wide overseas limits as allowed by RBI and in terms of SEBI Circular no. SEBI/HO/IMD/IMD-II/DOF3/P/CIR/2021/571 dated June 03, 2021.

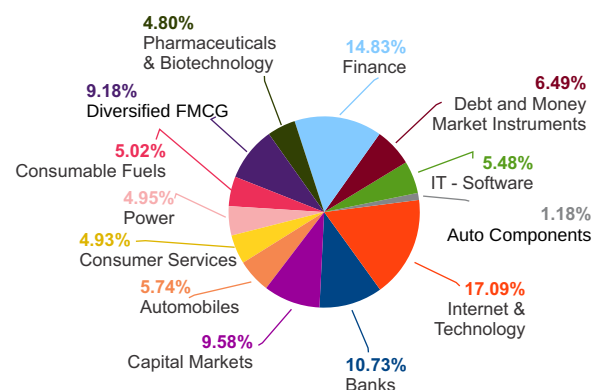
Portfolio Disclosure

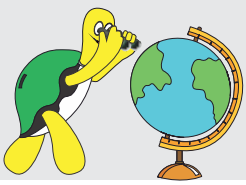
Core Equity		
Name	Industry	% of Net Assets
ITC Ltd.	Diversified FMCG	9.18%
Bajaj Holdings & Investment Ltd.	Finance	7.42%
Housing Development Finance Corporation Ltd.	Finance	7.28%
ICICI Bank Ltd.	Banks	5.76%
Hero MotoCorp Ltd.	Automobiles	5.10%
Coal India Ltd.	Consumable Fuels	5.02%
Axis Bank Ltd.	Banks	4.97%
Power Grid Corporation of India Ltd.	Power	4.95%
HCL Technologies Ltd.	IT - Software	4.90%
Indian Energy Exchange Ltd.	Capital Markets	3.14%
Central Depository Services (I) Ltd.	Capital Markets	2.40%
Motilal Oswal Financial Services Ltd.	Capital Markets	1.88%
Multi Commodity Exchange of India Ltd.	Capital Markets	1.46%
Balkrishna Industries Ltd.	Auto Components	1.18%
Dr. Reddy's Laboratories Ltd.	Pharmaceuticals & Biotechnology	1.07%
Zyudus Lifesciences Ltd.	Pharmaceuticals & Biotechnology	0.99%
Sun Pharmaceutical Industries Ltd.	Pharmaceuticals & Biotechnology	0.94%
Cipla Ltd.	Pharmaceuticals & Biotechnology	0.93%
IPCA Laboratories Ltd.	Pharmaceuticals & Biotechnology	0.87%
ICRA Ltd.	Capital Markets	0.70%
Oracle Financial Services Software Ltd.	IT - Software	0.58%
Maharashtra Scooters Ltd.	Finance	0.13%
Total		70.85%
Overseas Securities, IDRs and ADRs		
#Alphabet Inc (Google Class A)	Internet & Technology	7.10%
#Microsoft Corporation	Internet & Technology	6.56%
#AMAZON.COM INC	Consumer Services	4.93%
#Meta Platforms Inc (Formerly Facebook Inc)	Internet & Technology	3.43%
#Suzuki Motor Corp (ADR)^	Automobiles	0.64%
Total		22.66%
Debt and Money Market Instruments		
FDR	Debt and Money Market Instruments	0.26%
TREPS Including Cash & Cash Equivalent and Net Current Asset	Debt and Money Market Instruments	6.23%
Net Assets		100.00%

Currency hedge to the extent of approximately 80% of exposure.

^ Traded on US OTC Markets. Underlying shares are listed on Tokyo Stock Exchange

Industry Allocation





Parag Parikh Flexi Cap Fund

An open ended dynamic Equity scheme investing across large cap, mid cap, small cap stocks.

FACT SHEET - JUNE 2022

Lumpsum Investment Performance (Compounded annual returns)

Date	Scheme	Tier I Benchmark	Additional Benchmark	Value of Investment of Rs. 10,000/-		
	PPFCF (Regular)	NIFTY 500 (TRI)	NIFTY 50 (TRI)	PPFCF (Regular)	NIFTY 500 (TRI)	NIFTY 50 (TRI)
Since Inception (May 24, 2013)*	17.67%	13.55%	12.66%	43,994	31,819	29,618
June 30, 2021 to June 30, 2022 (Last 1 year)	2.25%	0.56%	1.66%	10,225	10,056	10,166
June 28, 2019 to June 30, 2022 (Last 3 year)	20.33%	12.77%	11.55%	17,448	14,353	13,891
June 30, 2017 to June 30, 2022 (Last 5 year)	16.37%	11.23%	12.03%	21,347	17,034	17,653

*Since inception returns are calculated on Rs. 10 (allotment price)

Note:

- Different plans shall have different expense structures.
- Scheme returns shown are for regular plan.
- Past performance may or may not be sustained in the future.
- Greater than 1 year returns are CAGR returns.
- Data presented here is upto the last calendar month.

SIP Investment Performance (Assumption : ₹ 10,000/- is invested on the first of every month)

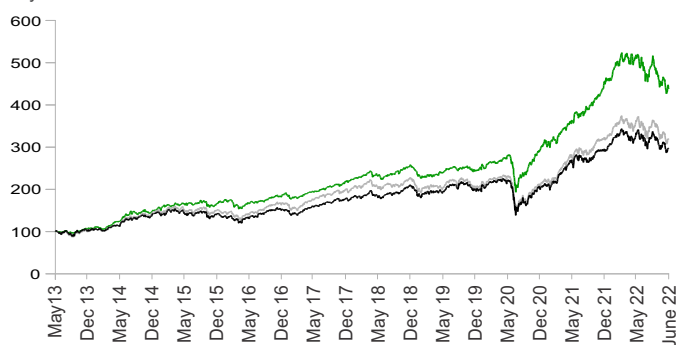
	Since Inception from May 24, 2013	June 30, 2021 to June 30, 2022 (Last 1 year)	June 28, 2019 to June 30, 2022 (Last 3 year)	June 30, 2017 to June 30, 2022 (Last 5 year)
Total Amount Invested	11,00,000	1,20,000	3,60,000	6,00,000
Market value of Investment (Regular Plan)	24,37,554	1,09,617	4,76,885	9,28,083
(Regular Plan) Returns (Annualised) (%)	16.70%	-15.73%	19.19%	17.50%
Nifty 500 (TRI) Returns (Annualised) (%)	12.62%	-13.79%	15.33%	12.34%
Nifty 50 (TRI) Returns (Annualised) (%)	12.18%	-11.77%	14.03%	12.25%

PPFCF Vs Benchmark Indices

- PPFCF Returns
- Tier I Benchmark Returns (Nifty 500 (TRI))
- Nifty 50 (TRI) Returns

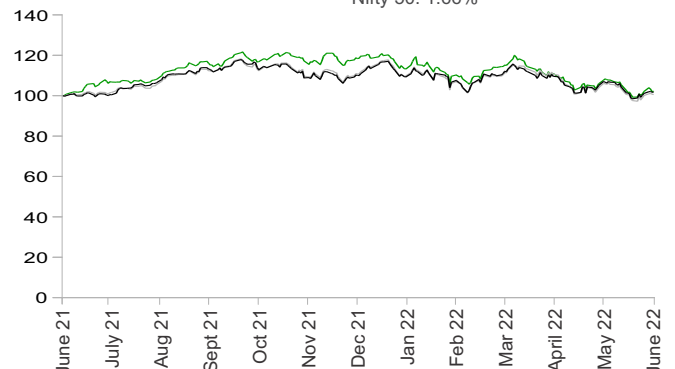
Since Inception

CAGR:
Scheme: 17.67%, Nifty 500: 13.55%
Nifty 50: 12.66%



June 30, 2021 to June 30, 2022

Scheme: 2.25%, Nifty 500: 0.56%
Nifty 50: 1.66%



Source: Internal sources

We have our Skin in the Game

The combined holding of 'Insiders' in **Parag Parikh Flexi Cap Fund** amounts to **₹ 266.82 Crores of AUM as at June 30, 2022**. For more details [please visit the 'Schemes' section of our website.](#)

Total number of units held in **Parag Parikh Flexi Cap Fund** as per SEBI Circular relating to Alignment of interest of Key Employees ('Designated Employees') of Asset Management Companies ('AMCs') with the unitholders of the Mutual Fund Schemes. (dated April 28, 2021 read with September 20, 2021) as at 30-06-2022

Scheme	Units	AUM (in Rs.)
Parag Parikh Flexi Cap Fund - Direct Plan	2,47,349.45	1,15,82,730.10

